

FABRIC SUITABILITY LIST



FABRICS

Enhance your designs with consciously chosen fabrics of top-notch performance and sustainable profiles. If you're seeking a solution that goes beyond standard options, please contact HOWE Customer Service.

40/4
MNI
SixE
AS100



62126

CURA by Gabriel

EMEA + US/CAN price group 1

Composition: 98% post-consumer recycled polyester, 2% polyester
Martindale: 100.000
Washable: 60-74°C
Cleanable: YES

Flammability CAL 117: YES
Added flame retardant: NO
Flammability M: NO
Crib 5: NO
Ecolabel: YES
Oeko-Tex: YES

[VIEW FULL COLOR RANGE](#)

40/4
MNI
SixE
AS100



64030

EVENT by Gabriel

EMEA + US/CAN price group 1

Composition: 100% polyester
Martindale: 100.000
Washable: 60°C
Cleanable: YES

Flammability CAL 117: YES
Added flame retardant: NO
Flammability M: NO
Crib 5: NO
Ecolabel: YES
Oeko-Tex: YES

[VIEW FULL COLOR RANGE](#)

40/4
MNI

SixE
AS100
Needs testing



61095

FIGHTER by Gabriel

EMEA + US/CAN price group 1

Composition: 100% recyclable polyester
Martindale: 130.000
Washable: YES
Cleanable: Only dry

Flammability CAL 117: YES
Added flame retardant: NO
Flammability M: NO
Crib 5: NO
Ecolabel: NO
Oeko-Tex: YES

[VIEW FULL COLOR RANGE](#)

40/4
MNI
SixE
AS100



Wedgwood - IF027

MAIN LINE PLUS by Camira

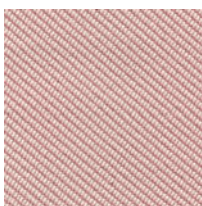
EMEA + US/CAN price group 1

Composition: 67% wool, 20% flame retardant viscose, 13% viscose
Martindale: ≥50,000
Washable: YES
Cleanable: YES

Flammability CAL 117: YES
Added flame retardant: YES
Flammability M: NO
Crib 5: YES
Ecolabel: NO
Oeko-Tex: YES

[VIEW FULL COLOR RANGE](#)

40/4
MNI
SixE



Seafarer - OOC16

OCEANIC by Camira

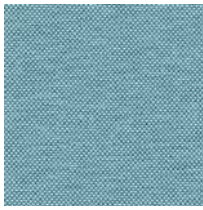
EMEA + US/CAN price group 1

Composition: 100% post-consumer recycled polyester
Martindale: ≥100,000
Washable: 60°C
Cleanable: YES

Flammability CAL 117: YES
Added flame retardant: NO
Flammability M: NO
Crib 5: NO
Ecolabel: YES
Oeko-Tex: YES

[VIEW FULL COLOR RANGE](#)

40/4
MN1
SixE



Tide - QUE12

QUEST by Camira

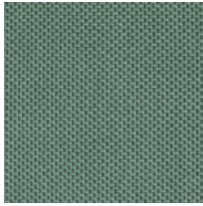
EMEA + US/CAN price group 1

Composition: 100% post-consumer recycled polyester
Martindale: ≥100,000
Washable: 60°C
Cleanable: YES

Flammability CAL 117: YES
Added flame retardant: NO
Flammability M: NO
Crib 5: NO
Ecolabel: YES
Oeko-Tex: YES

[VIEW FULL COLOR RANGE](#)

40/4
MN1
SixE
AS100



Joy - REP07

REPLAY by Camira

EMEA + US/CAN price group 1

Composition: 100% post-consumer recycled flame retardant polyester
Martindale: ≥100,000
Washable: 60°C
Cleanable: YES

Flammability CAL 117: NO
Added flame retardant: YES
Flammability M: M1
Crib 5: NO
Ecolabel: YES
Oeko-Tex: YES

[VIEW FULL COLOR RANGE](#)

40/4
MN1
SixE



Resin - EGL04

RIVET by Camira

EMEA + US/CAN price group 1

Composition: 100% post-consumer recycled polyester
Martindale: ≥80,000
Washable: 60°C
Cleanable: YES

Flammability CAL 117: YES
Added flame retardant: NO
Flammability M: NO
Crib 5: NO
Ecolabel: YES
Oeko-Tex: NO

[VIEW FULL COLOR RANGE](#)

40/4
MN1
SixE



66763

STEP by Gabriel

EMEA + US/CAN price group 1

Composition: 100% Trevira CS
Martindale: 100.000
Washable: 60-74°C
Cleanable: YES

Flammability CAL 117: YES
Added flame retardant: YES
Flammability M: M1
Crib 5: YES
Ecolabel: YES
Oeko-Tex: YES

[VIEW FULL COLOR RANGE](#)

40/4
MN1
SixE
AS100



63138

STEP MELANGE by Gabriel

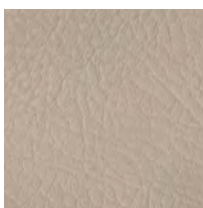
EMEA + US/CAN price group 1

Composition: 100% Trevira CS
Martindale: 100.000
Washable: 60-74°C
Cleanable: YES

Flammability CAL 117: YES
Added flame retardant: YES
Flammability M: M1
Crib 5: YES
Ecolabel: YES
Oeko-Tex: YES

[VIEW FULL COLOR RANGE](#)

40/4
MN1
SixE
AS100



Atacama - TAN-0004

TANNERY by Spradling

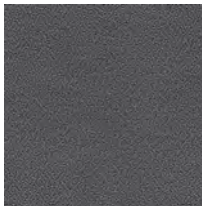
EMEA + US/CAN price group 1

Composition: Vinyl topcoat, cotton backing
Martindale: >100.000
Washable: NO
Cleanable: YES

Flammability CAL 117: YES
Added flame retardant: YES
Flammability M: M2
Crib 5: NO
Ecolabel: NO
Oeko-Tex: NO

[VIEW FULL COLOR RANGE](#)

40/4
MNI
SixE



Blizzard - YS081

XTREME by Camira

EMEA + US/CAN price group 1

Composition: 100% post-consumer recycled flame retardant polyester
 Martindale: ≥100,000
 Washable: 60°C
 Cleanable: YES

Flammability CAL 117: YES
 Added flame retardant: YES
 Flammability M: NO
 Crib 5: YES
 Ecolabel: YES
 Oeko-Tex: YES

[VIEW FULL COLOR RANGE](#)

40/4
MNI
SixE
AS100



Tooting - MLF7

MAIN LINE FLAX by Camira

EMEA + US/CAN price group 2

Composition: 70% virgin wool, 30% flax
 Martindale: ≥50,000
 Washable: NO
 Cleanable: YES

Flammability CAL 117: YES
 Added flame retardant: NO
 Flammability M: NO
 Crib 5: YES
 Ecolabel: YES
 Oeko-Tex: NO

[VIEW FULL COLOR RANGE](#)

40/4
MNI
SixE



Warrior - 466553-045

METAPHOR by Maharam

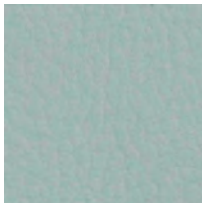
EMEA + US/CAN price group 2

Composition: 100% polyester
 Martindale: 100,000 double rubs Wyzenbeek
 Washable: NO
 Cleanable: YES

Flammability CAL 117: YES
 Added flame retardant: NO
 Flammability M: NO
 Crib 5: NO
 Ecolabel: NO
 Oeko-Tex: NO

[VIEW FULL COLOR RANGE](#)

40/4
MNI



Skylight

VALENCIA B1 by Spradling

EMEA + US/CAN price group 2

Composition: Vinyl topcoat, cotton backing
 Martindale: >300.000
 Washable: NO
 Cleanable: YES

Flammability CAL 117: YES
 Added flame retardant: YES
 Flammability M: M1
 Crib 5: YES
 Ecolabel: NO
 Oeko-Tex: NO

[VIEW FULL COLOR RANGE](#)

40/4
MNI
SixE
AS100



04031

CRISP by Gabriel

EMEA + US/CAN price group 3

Composition: 93% wool, 7% polyamide
 Martindale: 200 000
 Washable: NO
 Cleanable: YES

Flammability CAL 117: YES
 Added flame retardant: NO
 Flammability M: M1
 Crib 5: NO
 Ecolabel: YES
 Oeko-Tex: YES

[VIEW FULL COLOR RANGE](#)

40/4
MNI
SixE
AS100



64119

FAME by Gabriel

EMEA + US/CAN price group 3

Composition: 95% wool, 5% polyamide
 Martindale: 200 000
 Washable: NO
 Cleanable: Only dry

Flammability CAL 117: YES
 Added flame retardant: NO
 Flammability M: NO
 Crib 5: YES
 Ecolabel: YES
 Oeko-Tex: YES

[VIEW FULL COLOR RANGE](#)

40/4
MNI
SixE
AS100

0682

REMIX 3 by Kvadrat

EMEA + US/CAN price group 3

Composition: 90% new wool, 10% nylon
 Martindale: 100,000
 Washable: NO
 Cleanable: Only dry

Flammability CAL 117: YES
 Added flame retardant: NO
 Flammability M: NO
 Crib 5: NO
 Ecolabel: YES
 Oeko-Tex: NO

[VIEW FULL COLOR RANGE](#)
40/4
MNI
AS100

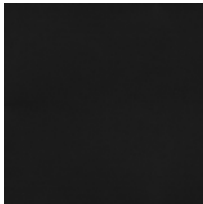
0926

CANVAS 2 by Kvadrat

EMEA + US/CAN price group 4

Composition: 90% new wool, 10% nylon
 Martindale: 100,000
 Washable: NO
 Cleanable: Only dry

Flammability CAL 117: YES
 Added flame retardant: NO
 Flammability M: NO
 Crib 5: NO
 Ecolabel: YES
 Oeko-Tex: NO

[VIEW FULL COLOR RANGE](#)
40/4
MNI
AS100

Black - 41599

ULTRA by Sørensen Leather

EMEA + US/CAN price group 4

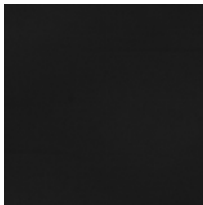
(TANGO), BLACK

Composition: Protected
 Martindale: -
 Washable: -
 Cleanable: -

Flammability CAL 117: YES
 Added flame retardant: NO
 Flammability M: -
 Crib 5: -
 Ecolabel: -
 Oeko-Tex: -

[BLACK ONLY](#)

AS100



Black - 42438

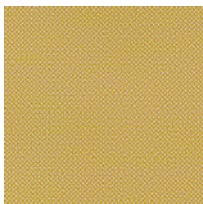
BASIC by Sørensen Leather

EMEA + US/CAN price group 5

(KNIGHT), BLACK40/4
MNI
Needs
testing

Composition: Protected
 Martindale: -
 Washable: -
 Cleanable: -

Flammability CAL 117: YES
 Added flame retardant: NO
 Flammability M: -
 Crib 5: -
 Ecolabel: -
 Oeko-Tex: YES

[BLACK ONLY](#)
40/4
MNI
SixE
AS100

0407

HALLINGDAL 65 by Kvadrat

EMEA + US/CAN price group 5

Composition: 70% new wool,
30% viscose
 Martindale: 100.000
 Washable: NO
 Cleanable: Only dry

Flammability CAL 117: YES
 Added flame retardant: NO
 Flammability M: NO
 Crib 5: YES
 Ecolabel: YES
 Oeko-Tex: NO

[VIEW FULL COLOR RANGE](#)
40/4
MNI
SixE
AS100

0865

STEELCUT TRIO 3 by Kvadrat

EMEA + US/CAN price group 5

Composition: 90% new wool, 10% nylon
 Martindale: 100.000
 Washable: NO
 Cleanable: Only dry

Flammability CAL 117: YES
 Added flame retardant: NO
 Flammability M: NO
 Crib 5: NO
 Ecolabel: YES
 Oeko-Tex: NO

[VIEW FULL COLOR RANGE](#)

40/4
MNI
AS100

Burgundy - 30317

SAVANNE by Sørensen Leather

EMEA + US/CAN price group LSL

Composition: Semi-aniline
 Martindale: -
 Washable: -
 Cleanable: -

Flammability CAL 117: -
 Added flame retardant: -
 Flammability M: -
 Crib 5: -
 Ecolabel: -
 Oeko-Tex: YES

[VIEW FULL COLOR RANGE](#)
40/4
MNI
AS100

Altwiss - 41576

ULTRA by Sørensen Leather

EMEA + US/CAN price group LUCL

(TANGO), COLOURED

Composition: Protected
 Martindale: -
 Washable: -
 Cleanable: -

Flammability CAL 117: -
 Added flame retardant: -
 Flammability M: -
 Crib 5: -
 Ecolabel: -
 Oeko-Tex: -

[VIEW FULL COLOR RANGE](#)




Subject to ongoing changes and adjustments